

TOLEDO HYDRAULIC

PH: 419-442-7000 EMAIL: CS@TOLEDOHYDRAULIC.COM



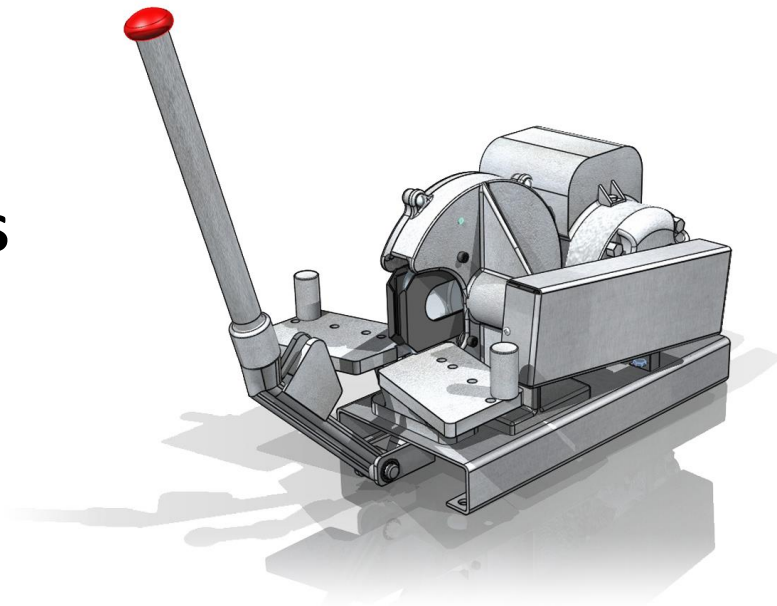
27814
Oct, 2018
REV I

Hose Machine

TOLEDO TOOLS - NO.8 HOSE CUT-OFF MACHINE

OWNER'S MANUAL

NO. 8



WARNING

Personal injury and/or equipment damage will result by failing to pay attention to the vital safety information and instructions in this manual. Carefully read, understand, and retain all safety information and instructions before operating this compressor.

NO. 8 HOSE CUT-OFF MACHINE

LIMITED SAFETY INSTRUCTIONS

 WARNING
--

<p>Before starting and operating this machine, read and comply with the following safety instructions. Failure to do so may result in personal injury.</p>

1. Do not operate this machine without blade guard.
2. Remove all tools from cutting table and from around the machine before starting and operating.
3. Keep work area free of obstructions.
4. Do not overload or use machine for other than intended purpose.
5. Do not force hose into the blade, which could cause the motor to stall with possible burn out and blade breakage. Apply light steady pressure to the cutting handle.
6. Do not operate machine wearing loose clothing or jewelry.
7. Do not operate machine without wearing safety glasses and face shield.
8. Properly secure machine before operating (See mounting instructions).
9. Do not operate machine with dull blade.
10. To avoid accidental starting, disconnect power supply before performing maintenance, servicing, setting up or when machine is not in service.
11. Clean the guard interior with every blade change. Excessive build up will effect inner guard travel.

LIST OF ILLUSTRATIONS

Figure 1: MOUNTING THE MACHINE	3
Figure 2: CUTTING POSITIONS	4
Figure 3: BLADE CHANGE	5
Figure 4: EXPLODE VIEW	6
Figure 5: OPTIONAL INNER GUARD	6

OPERATING INSTRUCTIONS

Your No. 8 Hose Cut-off Machine will cut all types of industrial hose including high pressure double-wire braided hose in sizes up through 1 1/2" I. D. When used properly, it will produce a straight, clean cut on any hose within its range.

NOTICE

This machine is designed for manual feed only.

Model	HP	Voltage	Hose Capacity	Blade Furnished	Weight (Lbs.)
8	1.5	1/60/115V	1.50" I.D.	8" Bevel	85
8	1.5	1/60/115V	1.50" I.D.	8" Scalloped	85
8	2	1/60/230V	1.50" I.D.	8" Bevel	85
8	2	1/60/230V	1.50" I.D.	8" Scalloped	85

Note:

Capacity: Cuts up to 1.50" I.D. single wire Braided hose with Bevel Blade or single and double wire Braid hose with Scalloped blade.

MOUNTING THE MACHINE

Before attempting to operate this machine it must first be firmly bolted through the four mounting holes (located on the base flanges) to a bench or stand so that two sides are accessible to the operator. (See Figure 1)

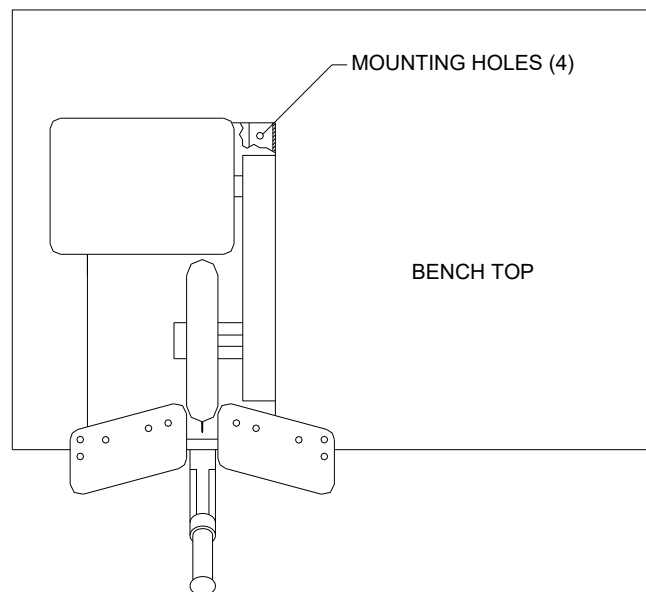


Figure 1: MOUNTING THE MACHINE

CUTTING

The cutting table is provided with five sets of holes for the two hose pins. Place the pins in the outside pair of holes when cutting larger sizes of hose. A little experience will enable the operator to select which set of holes will work best for each size of hose.

! WARNING
Do not operate machine without wearing safety glasses and face shield.

Place the hose on the cutting table outside the two pins as shown in Figure 2. Start the machine and push the handle forward as shown in Figure 3. This forces the hose into a pre-bend. Continue to push the handle forward until the cut is complete. Stop the machine.

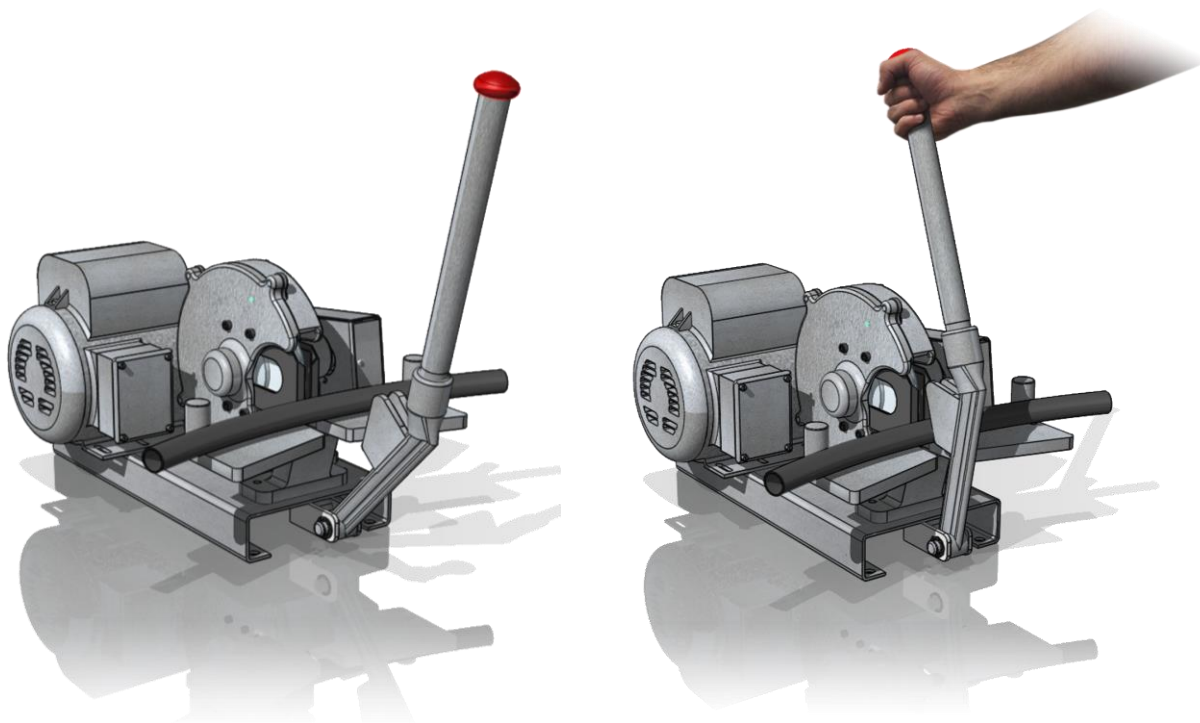


Figure 2: CUTTING POSITIONS

On larger size hose you will find it beneficial to cut through a quarter of the hose at a time, backing off between cuts to allow the blade to cool. This procedure will greatly enhance blade life.

BLADE CHANGE

Over a period of time the cutting blade will dull. Do not attempt to cut hydraulic hose with a dull blade. New blades are available through your Curtis – Toledo distributor. Blades can also be re-sharpened. See “Blade Re-Sharpener Procedure”.

⚠ DANGER

Cutting blades are very sharp. Use extreme caution when handling. We recommend wearing heavy-duty gloves when removing and replacing blades.

The blade can easily be removed from the machine as follows: (Ref. Figure 4)

1. Unscrew the (3) screws holding the blade guard and remove it from the blade guard assembly.
2. Loosen and remove the hex nut from the blade shaft.
3. Carefully remove the washer, drive disk and blade from the blade guard bracket.
4. Replace with a new or re-sharpened blade.
5. Re-install the drive disk, washer and hex nut on the drive shaft and tighten securely.
6. Replace the blade guard and secure with the (3) mounting screws.

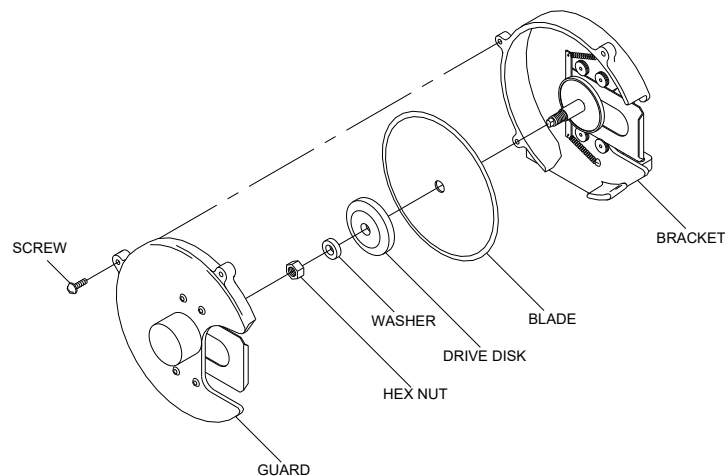


Figure 3: BLADE CHANGE

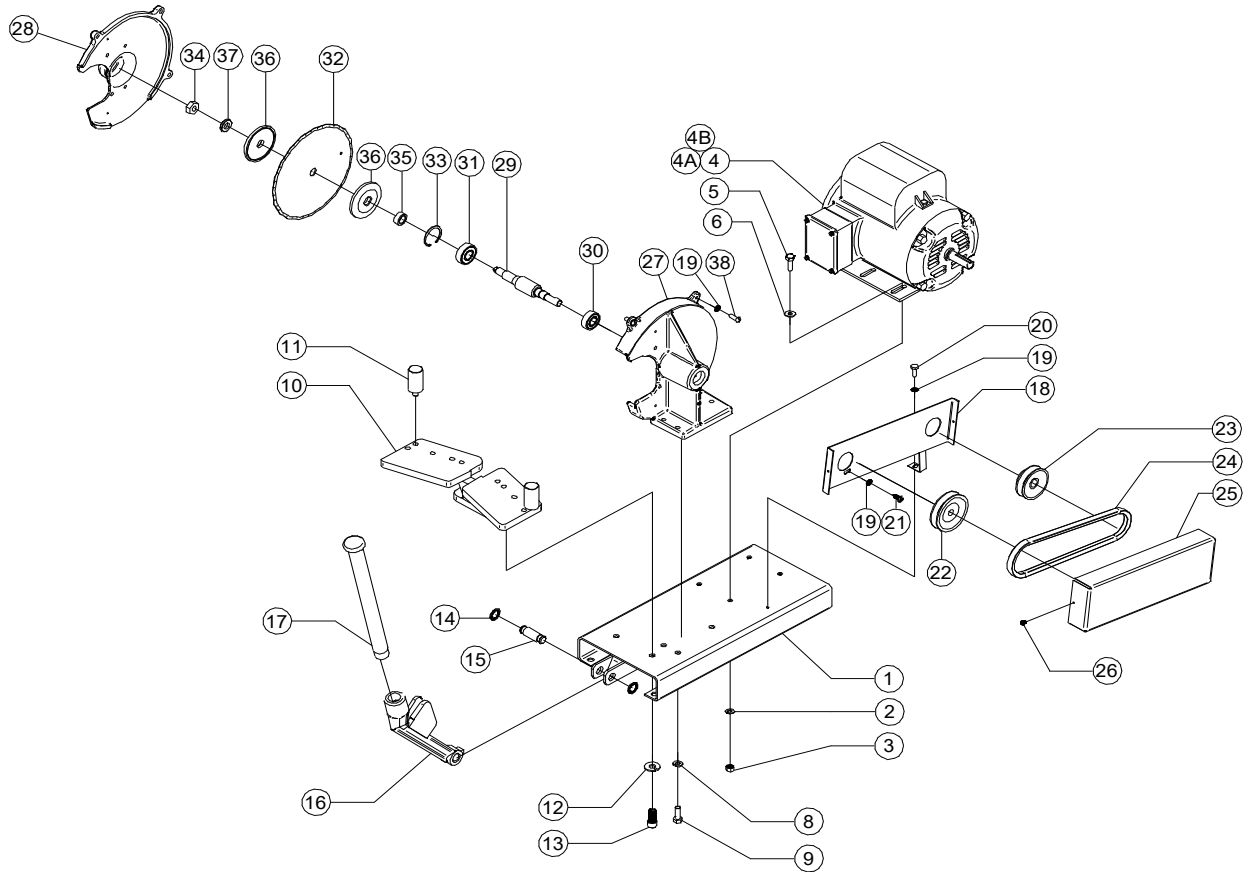


Figure 4: EXPLODE VIEW

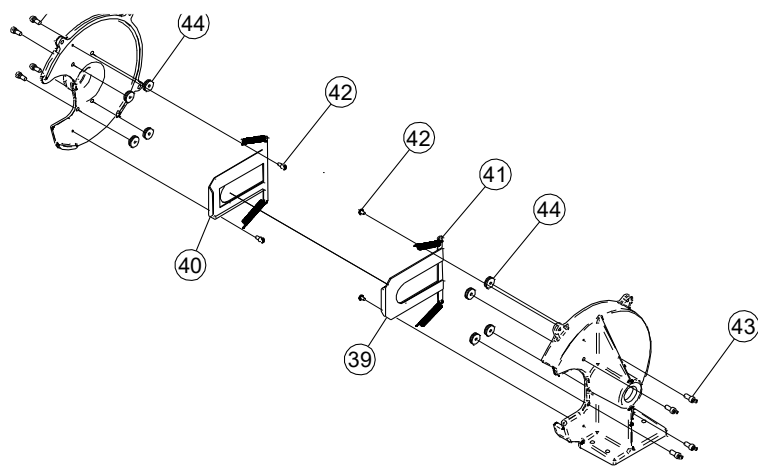


Figure 5: OPTIONAL INNER GUARD

NO. 8 HOSE CUT-OFF MACHINE PARTS LIST (REF. FIG. 5)**CLICK PART NUMBER TO GO TO WEBSITE.**

ITEM NO.	DESCRIPTION	QTY.	PART NO.
1	BASE AND YOKE ASSY	1	F26697
2	LOCK WASHER 5/16 SPLIT ZINC PLATED	4	FVH35H1
3	NUT HEX HEAVY 0.3125-18	4	F4466
4	MOTOR	SEE TABLE 1	
4A	TOGGLE SWITCH FOR 1.5HP MOTOR #8 HM	1	F7360K8
4B	TOGGLE SWITCH METAL GUARD	1	F8MTSP
5	HHCS 5/16-18 X 1" GRADE 5 ZINC PLATED	4	FVH12HH1
6	WASHER FLAT, SAE 0.3125	4	F16003
8	LOCKWASHER 3/8" ZINC PLATED	3	FVH35K1
9	HHCS 3/8-16 X 1" GRADE 5 ZINC PLATED	3	FVH12KH1
10	CUTTING TABLE	1	F16322
11	HOSE PIN	2	F16325
12	LOCKWASHER, SPLIT 0.4375	2	F16373
13	HEX HD CAP 0.4375-14UNC X 1, GRADE 5	2	FVH12MH
14	RING RETAINING	2	F27137
15	PIVOT PIN	1	F16326
16	CUTOFF ARM	1	F24341
17	HANDLE AND KNOB ASSY.	1	F13833
18	BETL GUARD BRACKET	1	F26731
19	LOCKWASHER-INTERNAL TOOTH 1/4"	5	FVH38F
20	HHCS 1/4-20 X 3/4" LONG ZINC PLATED	1	FVH12FF1
21	SCREW FOR SHEET EMTAL #14 X 0.75	1	FVH44FF
22	SHEAVE (KNIFE SHAFT)	1	F26479
23	SHEAVE (MOTOR SHAFT)	1	F26478
24	V BELT 4L260	1	F28052
25	BELT GUARD	1	F26730
26	SCREW PHILLIP HEAD #8 X 0.375	2	F67467
27	CUT-OFF KNIFE BKT	1	F24276
28	#7 HOSE MACHINE BLADE GUARD	1	F24277
29	#8 HOSE MACHINE SHAFT	1	F26620
30	BALL BEARING	1	F16331
31	BALL BEARING	1	F13591
32	8" CUTOFF BLADE	SEE TABLE 2	
33	SNAP RING	1	F16797
34	NUT 1/2-13 LH THREADS ZINC PLATED	1	F14170
35	BALL BEARING	1	F26669
36	CUTOFF KNIFE DRIVE DISC	2	F16333
37	WASHER - BLACK OXIDE	1	F11303
38	FLAT HEAD MACHINE SCREW 1/4-20	3	F4461
39	LEFT HAND BLADE GUARD	1	F26681
40	RIGHT HAND BLADE GUARD	1	F26682
41	INNER GUARD SPRING	4	F26983
42	FHMS10/32 X 3/8	4	FVH01CC
43	SHCS, 1/4-20 X 1/2 BLACK OXIDE	8	F26670
44	GUARD BUTTON	8	F26667

CLICK PART NUMBER TO GO TO WEBSITE.

CLICK PART NUMBER TO GO TO WEBSITE.

TABLE 1: MOTOR OPTIONS

PART NUMBER	HORSE POWER	PHASES	VOLTAGE
FMT111X2	1.5 HP	1	115 V
FMT022T2P	2 HP	1	230V

TABLE 2: CUTTING KNIFE

PART NUMBER	DESCRIPTION
F24326	BLADE, 8" BEVELLED EDGE
F24398	BLADE, 8" WAVY EDGE

CLICK PART NUMBER TO GO TO WEBSITE.

NOTES

NOTES

NOTES



TOLEDO HYDRAULIC
PH: 419-442-7000 EMAIL: CS@TOLEDOHYDRAULIC.COM

Toledo Industrial Supply LLC
Toledo, OH 43614
www.toledohydraulic.com