

TOLEDO HYDRAULIC

PH: 419-442-7000 EMAIL: CS@TOLEDOHYDRAULIC.COM



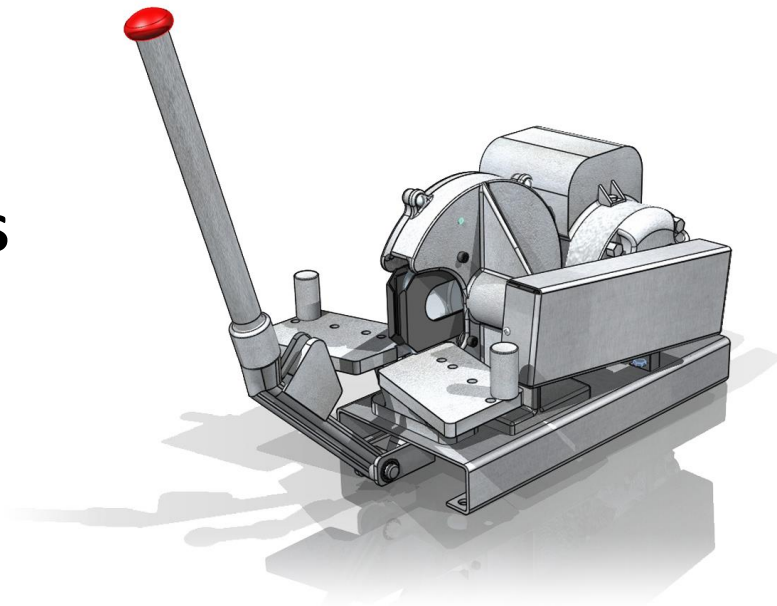
27805
Oct, 2018
REV I

Hose Machine

TOLEDO TOOLS - NO.7 HOSE CUT-OFF MACHINE

OWNER'S MANUAL

NO. 7



WARNING

Personal injury and/or equipment damage will result by failing to pay attention to the vital safety information and instructions in this manual. Carefully read, understand, and retain all safety information and instructions before operating this compressor.

NO. 7 HOSE CUT-OFF MACHINE

LIMITED SAFETY INSTRUCTIONS

 WARNING
Before starting and operating this machine, read and comply with the following safety instructions. Failure to do so may result in personal injury.

1. Do not operate this machine without blade guard.
2. Remove all tools from cutting table and from around the machine before starting and operating.
3. Keep work area free of obstructions.
4. Do not overload or use machine for other than intended purpose.
5. Do not force hose into the blade, which could cause the motor to stall with possible burn out and blade breakage. Apply light steady pressure to the cutting handle.
6. Do not operate machine wearing loose clothing or jewelry.
7. Do not operate machine without wearing safety glasses and face shield.
8. Properly secure machine before operating (See mounting instructions).
9. Do not operate machine with dull blade.
10. To avoid accidental starting, disconnect power supply before performing maintenance, servicing, setting up or when machine is not in service.
11. Clean the guard interior with every blade change. Excessive build up will effect inner guard travel.

LIST OF ILLUSTRATIONS

Figure 1: MOUNTING THE MACHINE	2
Figure 2: CUTTING POSITIONS	3
Figure 3: BLADE CHANGE	4
Figure 4: EXPLODE VIEW	5
Figure 5: OPTIONAL INNER GUARD	5

OPERATING INSTRUCTIONS

Your No. 7 Hose Cut-off Machine will cut all types of industrial hose including high pressure double-wire braided hose. When used properly, it will produce a straight, clean cut on any hose within its range.

NOTICE

This machine is designed for manual feed only.

Model	HP	Voltage	Hose Capacity	Blade Furnished	Weight (Lbs.)
7	1	1/60/115V	1.25" I.D.	7" Bevel	85
7	1	1/60/115V	1.25" I.D.	7" Scalloped	85
7	1.5	1/60/115V	1.25" I.D.	7" Bevel	85
7	1.5	1/60/115V	1.25" I.D.	7" Scalloped	85
7	2	1/60/230V	1.25" I.D.	7" Scalloped	85

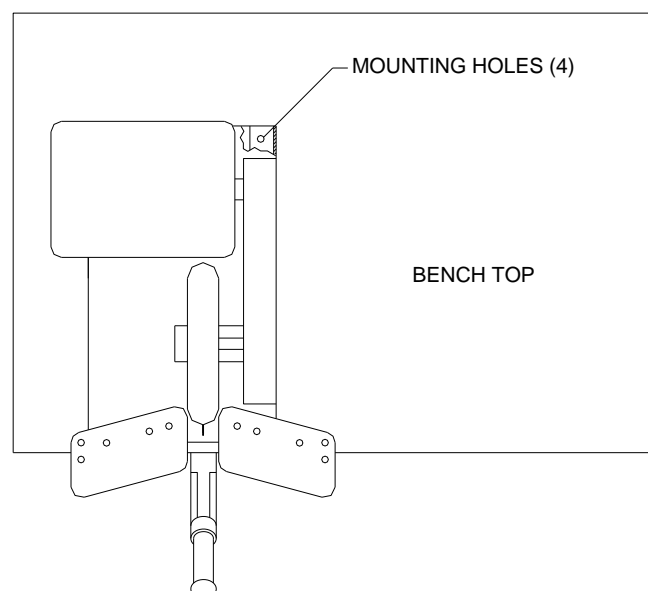
Note:

Capacity: Cuts up to 1.25" I.D. single wire Braid hose with Bevel Blade or single and double Braid hose with Scalloped Blade.

MOUNTING THE MACHINE

Before attempting to operate this machine it must first be firmly bolted through the four mounting holes (located on the base flanges) to a bench or stand so that two sides are accessible to the operator. (See Figure 1)

Figure 1: MOUNTING THE MACHINE



CUTTING

The cutting table is provided with five sets of holes for the two hose pins. Place the pins in the outside pair of holes when cutting larger sizes of hose. A little experience will enable the operator to select which set of holes will work best for each size of hose.

 WARNING
Do not operate machine without wearing safety glasses and face shield.

Place the hose on the cutting table outside the two pins as shown in Figure 2. Start the machine and push the handle forward as shown in Figure 3. This forces the hose into a pre-bend. Continue to push the handle forward until the cut is complete. Stop the machine.

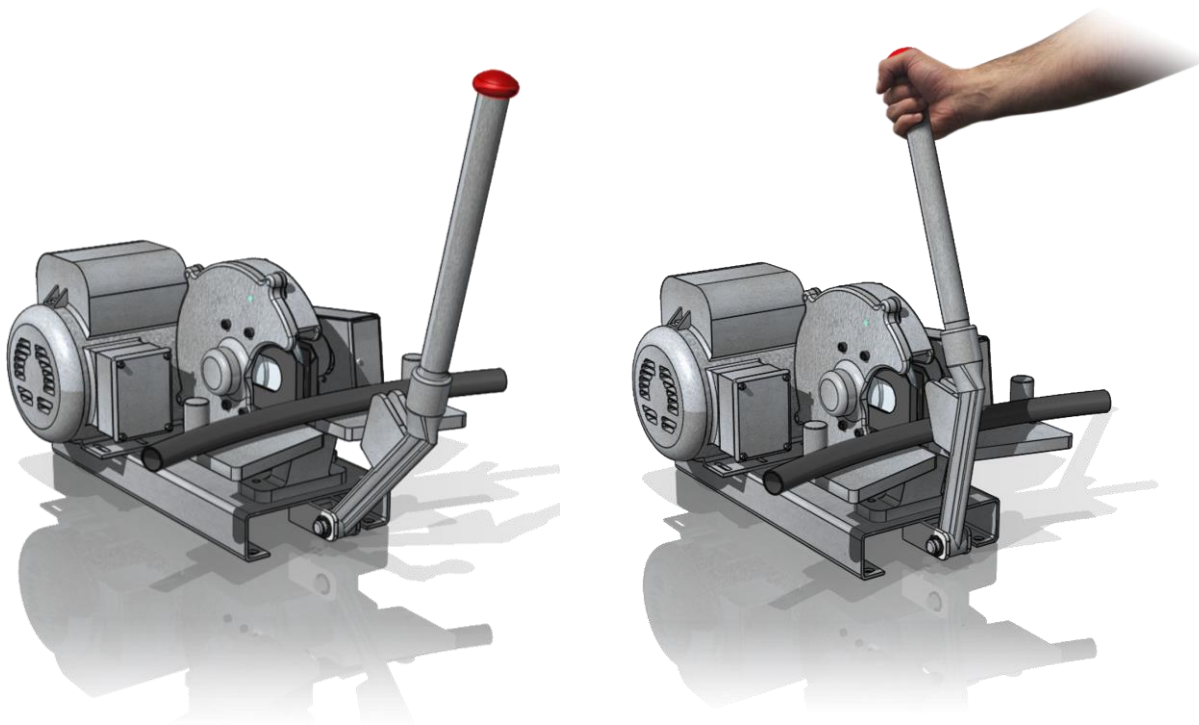


Figure 2: CUTTING POSITIONS

On larger size hose you will find it beneficial to cut through a quarter of the hose at a time, backing off between cuts to allow the blade to cool. This procedure will greatly enhance blade life.

BLADE CHANGE

Over a period of time the cutting blade will dull. Do not attempt to cut hydraulic hose with a dull blade. New blades are available through your Curtis – Toledo distributor. Blades can also be re-sharpened. See “Blade Re-Sharpener Procedure”.

⚠ DANGER

Cutting blades are very sharp. Use extreme caution when handling. We recommend wearing heavy-duty gloves when removing and replacing blades.

The blade can easily be removed from the machine as follows: (Ref. Figure 4)

1. Unscrew the (3) screws holding the blade guard and remove it from the blade guard assembly.
2. Loosen and remove the hex nut from the blade shaft.
3. Carefully remove the washer, drive disk and blade from the blade guard bracket.
4. Replace with a new or re-sharpened blade.
5. Re-install the drive disk, washer and hex nut on the drive shaft and tighten securely.
6. Replace the blade guard and secure with the (3) mounting screws.

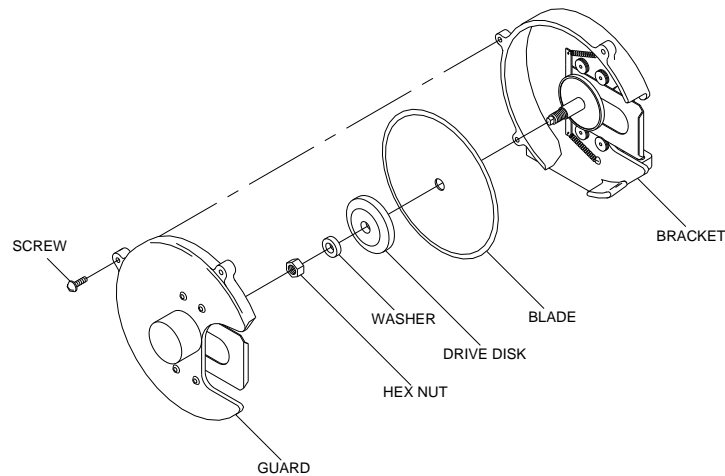


Figure 3: BLADE CHANGE

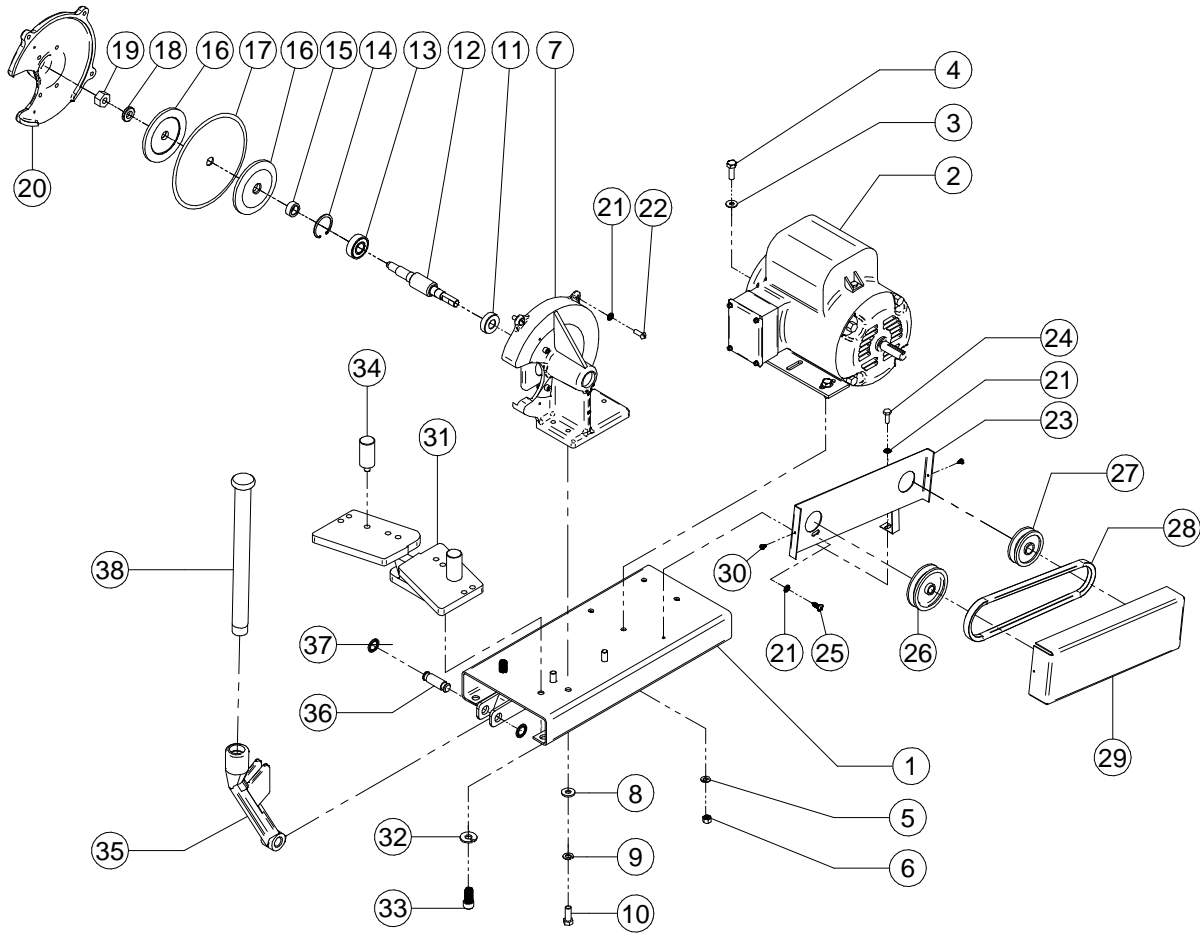


Figure 4: EXPLODE VIEW

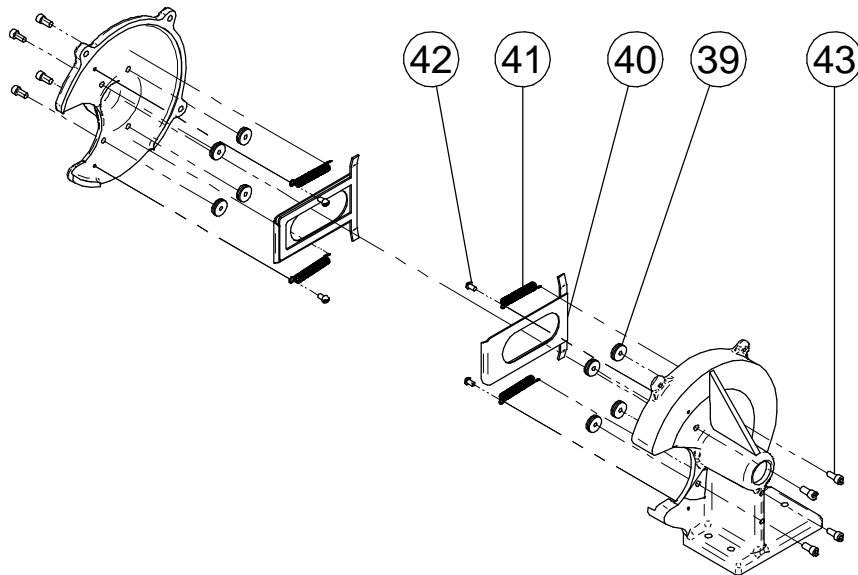


Figure 5: OPTIONAL INNER GUARD

NO. 7 HOSE CUT-OFF MACHINE PARTS LIST (REF. FIG. 4 & 5)

27805

CLICK PART NUMBER TO GO TO WEBSITE.

HM 7 PARTS LIST			
ITEM NO.	DESCRIPTION	QTY.	PART NUMBER
1	BASE AND YOKE ASSY	1	F26697
2	MOTOR	SEE TABLE 1	
3	WASHER FLAT, SAE 0.3125	4	F16003
4	HHCS 5/16-18 X 1" GRADE 5 ZINC PLATED	4	FVH12HH1
5	LOCK WASHER 5/16 SPLIT ZINC PLATED	4	FVH35H1
6	NUT HEX HEAVY 0.3125-18	4	F4466
7	CUT OFF KNIFE BRACKET	1	F16320
8	FLAT WASHER 5/16 ZINC PLATED	3	FVH32H1
9	LOCKWASHER 3/8" ZINC PLATED	3	FVH35K1
10	HHCS 3/8-16 X 1" GRADE 5 ZINC PLATED	3	FVH12KH1
11	BALL BEARING	1	F16331
12	SHAFT KNIFE	1	F26620
13	BALL BEARING	1	F13591
14	SNAP RING	1	F16797
15	KNIFE SPACER	1	F26669
16	CUT OFF KNIFE DRIVE DISC	2	F16333
17	CUTTING BLADE	SEE TABLE 2	
18	WASHER	1	F11303
19	NUT 0.5-13	1	F14170
20	CUT OFF KNIFE GUARD	1	F16321
21	LOCKWASHER-INTERNAL TOOTH 1/4"	5	FVH38F
22	FLAT HEAD MACHINE SCREW 1/4-20	3	F4461
23	BETL GUARD BRACKET	1	F26731
24	HHCS 1/4-20 X 3/4" LONG ZINC PLATED	1	FVH12FF1
25	SCREW FOR SHEET EMTAL #14 X 0.75	1	FVH44FF
26	PULLEY 4L X 2.3PD	1	F26479
27	PULLEY 4L X 2.8PD	1	F26478
28	V BELT 4L260	1	F28052
29	BELT GUARD	1	F26730
30	SCREW PHILLIP HEAD #8 X 0.375	2	F67467
31	CUTTING TABLE	1	F16322
32	LOCKWASHER, SPLIT 0.4375	2	F16373
33	HEX HD CAP 0.4375-14UNC X 1, GRADE 5	2	FVH12MH
34	HOSE PIN	2	F16325
35	CUT OFF ARM	1	2601043190
36	PIVOT PIN	1	F16326
37	RING RETAINING	2	F27137
38	HANDLE AND KNOB ASSY.	1	F13833
39	GUARD BUTTON	8	F26667
40	GUARD INNER	2	F26666
41	INNER GUARD SPRING	4	F26983
42	SCREW-MACHINE 10/32 X 3/8	4	FVH01CC
43	SHCS, 1/4-20 X 1/2 BLACK OXIDE	8	F26670

CLICK PART NUMBER TO GO TO WEBSITE.

CLICK PART NUMBER TO GO TO WEBSITE.

MOTOR OPTIONS

PART NUMBER	HORSE POWER	PHASES	VOLTAGE	FREQUENCY
FMT011X2P	1 HP	1	115 V	60 Hz
F26271	1.5 HP	1	115 V	60 Hz
FMT022T2P	2 HP	1	230 V	60 Hz

Table 1: MOTORS

CUTTING KNIFE OPTIONS

PART NUMBER	DESCRIPTION
F16334	BLADE, 7" BEVELLED EDGE
F22740	BLADE, 7" WAVY EDGE

Table 2: CUTTING KNIVES

CLICK PART NUMBER TO GO TO WEBSITE.

NOTES

NOTES

NOTES



TOLEDO HYDRAULIC

PH: 419-442-7000 EMAIL: CS@TOLEDOHYDRAULIC.COM

Toledo Industrial Supply LLC
Toledo, OH 43614
www.toledohydraulic.com